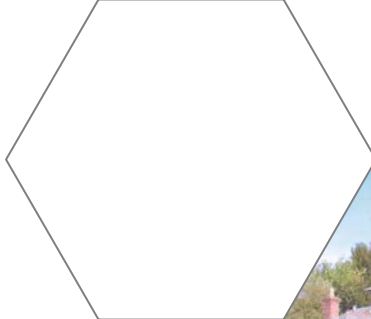


# draftinterimreport

KERNOW POSITIVE SUPPORT

# 2010

1<sup>st</sup> APRIL – 30<sup>th</sup> NOVEMBER



Registered Charity No. 1104947

# Draft Interim Report & Accounts

1<sup>st</sup> Apr 2010 – 30<sup>th</sup> Nov 2010

## Bankers

Lloyds TSB Bank plc  
Wadebridge Branch  
P. O. Box 1000  
BX1 1LT

## Solicitors

Peters Langsford Davies  
Westgate  
Launceston  
Cornwall  
PL15 9AD

## Book-keeper

Patricia McCartney

## Kernow Positive Support

P.O. Box 85  
Bodmin PL31 1ZN

**Main Office:** 01872 262221  
**Help line:** 01208 264866  
**Fax:** 01208 77950  
**Email:** [office@kpsdirect.com](mailto:office@kpsdirect.com)  
**Website:** [www.kpsdirect.com](http://www.kpsdirect.com)

## CORNWALL'S BEST OPTION

# KERNOW POSITIVE SUPPORT

## Objects

1) THE RELIEF OF SICKNESS AND DISTRESS OF PERSONS AFFECTED BY HIV/AIDS AND THEIR FAMILIES AND CARERS BY THE PROVISION OF ADVICE, INFORMATION, CARE SUPPORT AND COUNSELLING SERVICES. 2) THE PROVISION OF EDUCATION AND TRAINING TO MEMBERS OF THE PUBLIC IN THE NEEDS OF PERSONS LIVING WITH HIV/AIDS, AND IN THE BETTER UNDERSTANDING WITH A VIEW TO PROMOTING A BETTER UNDERSTANDING OF THE DISEASE.

## Governing Document

DECLARATION OF TRUST 27<sup>th</sup> NOVEMBER 2003, AS AMENDED BY SUPPLEMENTAL DEED DATED 2<sup>nd</sup> JULY 2004.

## Draft Interim Report & Accounts 2010

1<sup>st</sup> April 2010 – 30<sup>th</sup> November 2010

### First Trustee:

*(position currently held)*

David N. Solly (Chair)

### Other Trustees:

Max Rowse-De Franco  
Robert Hodgkins  
Sarah Rowse-De Franco  
Susan Brown

### Established:

27<sup>th</sup> November 2003

### Appointed:

21<sup>st</sup> January 2004  
3<sup>rd</sup> April 2004  
21<sup>st</sup> January 2008  
4<sup>th</sup> February 2008

**KPS is a Registered Charity:**  
Charity No. 1104947

# kernowpositivesupport

## OUR AIMS & OBJECTIVES

- to benefit all those in our community that are infected/affected by HIV.
- to give service users living in Cornwall an HIV support structure.
- to provide a national resource and place for respite and retreat.
- to reduce social isolation experienced by those living with HIV due to the associated stigma.
- to provide a safe, confidential and empathetic environment.
- to reduce emotional and mental hardship experienced by those living with HIV.
- to enable people with HIV to make informed choices about their lives.
- to raise awareness to all those in our community about HIV related issues.

## WE AIM TO DO THIS BY

- Providing a telephone help line open 5 days a week. Providing a support and information resource on services available.
- Providing housing and welfare rights and advocacy.
- Raising awareness of issues related to being HIV-positive within the local community, challenging inequality and discrimination.
- Providing a Web based information resource on services available.
- Providing training opportunities for service users, volunteers and statutory/voluntary agency professionals.
- Provide cost-effective retreat and peer support opportunities in a safe and confidential environment.
- Providing training opportunities for statutory/voluntary agency professionals.
- To further develop drop-in facilities and support groups based within the surrounding area for those infected/affected by HIV. Providing information, benefits advice, advocacy and peer support.
- To further develop complementary therapies and counselling services provided by trained and qualified professionals.
- To further develop a resource library for the use of service users and visitors to any future facility.

## OBJECTIVES AND ACTIVITIES FOR THE PUBLIC BENEFIT

The Kernow Positive Support (KPS) trustees confirm that they have referred to the guidance contained in the Charity Commission's general guidance on public benefit when reviewing the charity's aims and objectives and in planning future activities and setting policies for the year.

DAVID SOLLY  
CHAIR

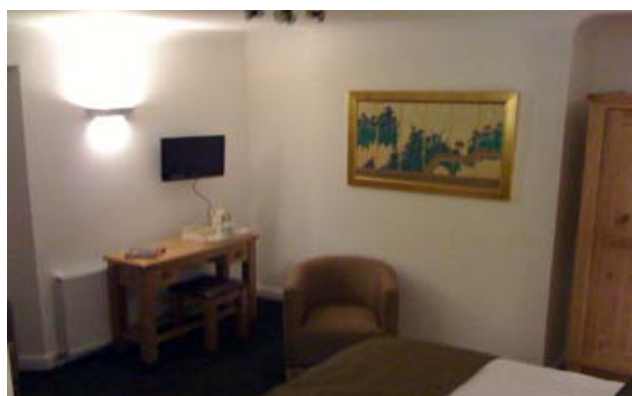


## An Interim Statement

This draft interim financial Statement for the period 1<sup>st</sup> April to 30<sup>th</sup> November 2010 covers the 9 months Kernow Positive Support (KPS) has operated this year. For 2010/11 KPS secured and received a slight increase on our previous core-funding from Cornwall Council and the Cornwall Primary Care Trust. Our housing related support from Cornwall Supporting People is also secured until the year end, and we are paid by monthly instalments.

KPS was proud to have been involved at the planning stages of the new Sexual Health Centre 'The Hub' at the Royal Cornwall Hospital. The Hub opened in May 2010, and we have an office within the new HIV suite situated on the lower ground floor. This year also sees the grant of £270,000 awarded via Cornwall Council in November 2009. Subsequently, the refurbishment work to Trebullom Farmhouse; a Grade 2 listed farmhouse with eight bedrooms commenced in April 2010. KPS Trebullom; a three year development project is overseen by the KPS Board of Trustees and the newly appointed KPS Trebullom Advisory Board that comprises of representatives of KPS trustees, staff and volunteers, Cornwall Council, Cornwall Health and the charity (*The Peredur Trust*) with whom we lease the property from. The refurbishment is now well underway, and we are officially opening this new exciting facility in Spring 2011.

**David N. Solly (Chair, founding Trustee)**



# draftaccountsfortheinterim

## KERNOW POSITIVE SUPPORT DRAFT STATEMENT OF ASSETS AND LIABILITIES FOR THE PERIOD 2010/11

<b>Cash funds</b>	<b>Unrestricted funds £</b>	<b>Restricted funds £</b>
Bank – Current accounts	11,446	13,582
<b>Total</b>	<b>11,446</b>	<b>13,582</b>
<b>Other monetary assets</b>		
<b>Ebay Auction income</b>	<b>144</b>	<b>-</b>
<b>Assets retained for the Charity's own use</b>		
Office equipment	2,130	-
Computer equipment	6,164	-
Furniture	879	-
Training equipment		1,446
<b>Total</b>	<b>9,053</b>	<b>1,446</b>
<b>Liabilities</b>		
<b>2010 Examination Fee</b>	<b>546</b>	<b>-</b>

# draftaccountsfortheinterim

## DRAFT NOTES FOR ACTIVITIES IN FURTHERANCE OF THE CHARITY'S OBJECTS ENDING 30<sup>th</sup> NOVEMBER 2010

<b>Receipts</b>	<b>Unrestricted funds £</b>	<b>Restricted funds £</b>	<b>total £</b>
<b>General donations &amp; receipts</b>			
Donations	834	-	834
Scrap Material	-	80	80
<b>Total</b>	<b>834</b>	<b>80</b>	<b>914</b>
<b>Grants received by 30<sup>th</sup> November 2010 for year April 2010 to March 2011</b>			
Cornwall Council <i>(Service Level Agreement)</i>	-	16,000	16,000
Cornwall Primary Care Trust	16,000	-	16,000
Cornwall Supporting People <i>(Housing Related Support)</i>	-	22,934	22,934
Lloyds TSB Foundation	-	20,000	20,000
KPS Trebullom Project <i>(HIV Capital Grant Scheme 2009/10)</i>	-	270,000	270,000
<b>Total Grants</b>	<b>16,000</b>	<b>328,934</b>	<b>344,934</b>
<b>Total income received</b>	<b>16,834</b>	<b>329,014</b>	<b>345,848</b>

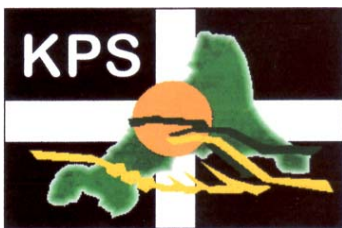
# draftaccountsfortheinterim

## DRAFT NOTES FOR ACTIVITIES IN FURTHERANCE OF THE CHARITY'S OBJECTS ENDING 30<sup>th</sup> NOVEMBER 2010

<b>Payments</b>	<b>Total to 30<sup>th</sup> Nov 2010 £</b>	<b>Total 2009/10 £</b>	<b>Total 2008/9 £</b>
<b>Local Support Services</b>			
Volunteer Travel & Subsistence	4,022	4,371	3,590
Counselling	2,052	2,588	1,463
Therapies	949	3,153	2,228
Training	455	502	1,860
Venue Hire ( <i>Peer Support</i> )	-	360	-
Food & Refreshments	568	551	568
Hardship Grants	1,056	2,415	1,612
Telephone	2,751	3,798	2,173
Internet Resources	105	140	409
Client Travel	188	588	2,063
Respite & Retreat	990	2,205	3,565
Women's Group	415	126	286
Postage & Resources	997	1,491	1,399
Publicity & Printing	254	364	4
Newsletter - @KPS	646	1,676	1,321
Health Promotion/Advertising	2,097	821	743
Stationary & In-house Printing	969	2,391	2,595
Office Utilities ( <i>Electricity</i> )	288	164	101
Insurances	972	1,012	985
Accounts Examination	535	-	506
New GUM Model Construction	-	639	-
Special Needs Grants	2,622	2,439	1,135
Bank charges	225	293	48
Accounts & Bookkeeping	475	700	550
Crusaid Grants	-	1,140	454
Premises Rent ( <i>Highertown</i> )	4,875	4,875	4,875
Repairs and Maintenance	689	305	74
Staff Salaries	23,977	43,639	44,768
Staff Travel	2,474	4,128	2,987
Sundry Charges	-	92	25
Legal & Professional Fees	-	1,680	405
Asset Purchases - Equipment	-	120	1,121
VAT repaid	-	2,073	-
Recruitment Costs	494	-	-
Publications	144	-	-
<b>Local Services Total</b>	<b>56,284</b>	<b>90,727</b>	<b>83,913</b>
<b>KPS Trebullom Project</b>			
Stationary & In-house Printing	-	143	-
Publicity & Promotion Leaflets	-	364	-
Newsletter - @KPS	646	-	-
Volunteer Travel & Subsistence	432	-	-
Lease – Trebullom Farmhouse	15,000	-	-
Legal & Professional Fees	4,664	640	-
Accounts – Book keeping	588	236	-
Utilities ( <i>Oil/Electrics</i> )	831	-	-
Refurbishment ( <i>Build</i> )	39,645	112	-
Building Materials	25,856	-	-
Plumbing Installation	19,573	-	-
Electrical Installation	6,824	-	-
Furniture & Electrical Equipment	43,938	-	-
Soft Furnishings	4,661	-	-
<b>KPS Trebullom Total</b>	<b>162,658</b>	<b>1,495</b>	<b>-</b>
<b>Total Expenditure</b>	<b>218,942</b>	<b>92,222</b>	<b>83,913</b>

# Draft Interim Report & Accounts

1<sup>st</sup> Apr 2010 – 30<sup>th</sup> Nov 2010



**Kernow Positive Support**  
KPS Publications  
P.O. Box 85  
Bodmin PL31 1ZN

**Main Office: 01872 262221**  
**Help line: 01208 264866**  
**Fax: 01208 77950**  
**Email: [office@kpsdirect.com](mailto:office@kpsdirect.com)**  
**Website: [www.kpsdirect.com](http://www.kpsdirect.com)**

**KPS is a Registered Charity:**  
Charity No. 1104947

Patrons: Sarah Ellen Macadam JP – The Late George Melly – The Late Bill Sloan